

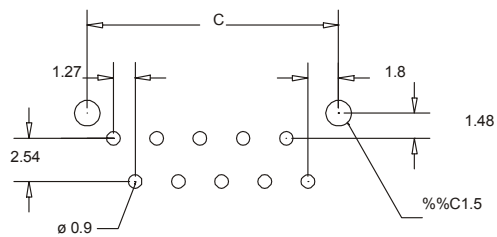
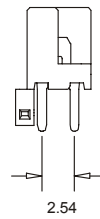
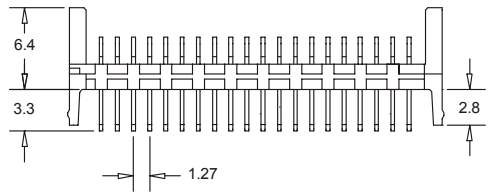
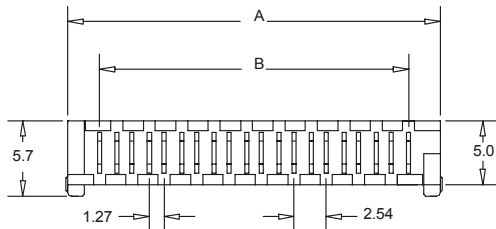
VERTICAL MALE CONEX-FLEX HEADER

1332 SERIES 2.54mm (0.100") For PCB

Features

- Available in 4, 6, 8, 10, 12, 14, 16, 18, 20 and 26 circuits
- Insulator Material: PBT, glass reinforced, UL 94V-0
- Contact Material: Phosphor bronze tin plated
- Current Rating: 1 Amp DC
- Contact Resistance: 30 mΩ maximum
- Insulation Resistance: 3.000 MΩ minimum
- Dielectric Withstanding Voltage: 500V AC for 1 minute
- Operation Temperature: -40°C to +105°C
- Mates with the 1330 series

Dimensional Information



RECOMMENDED HOLE PATTERN

Ordering and Dimensional Information

Circuit Size	Part Number	Dimensions		
		A	B	C
04	1332-2041	8.86 (0.349)	3.81(0.150)	7.41 (0.292)
06	1332-2061	11.40 (0.449)	6.35(0.250)	9.95 (0.392)
08	1332-2081	13.94 (0.549)	8.89(0.350)	12.49 (0.492)
10	1332-2101	16.48 (0.649)	11.43(0.450)	15.03 (0.592)
12	1332-2121	19.02 (0.749)	13.97(0.550)	17.57 (0.692)
14	1332-2141	21.56 (0.849)	16.51(0.650)	20.11 (0.792)
16	1332-2161	24.10 (0.949)	19.05(0.750)	22.65 (0.892)
18	1332-2181	26.64 (1.049)	21.59(0.850)	25.19 (0.992)
20	1332-2201	29.18 (1.149)	24.13(0.950)	27.73 (1.092)
26	1332-2261	36.80 (1.449)	31.75(1.250)	35.35 (1.392)

T = Contact Plating

- T = 2. Tin plated
- T = 3. Gold flash over 50μ" nickel.
Recommended Finish
- T = 5. 15μ" gold over 50μ" nickel
- T = 6. 30μ" gold over 50μ" nickel
- T = 13. Selective gold flash over 50μ" nickel
- T = 15. 15μ" selective gold over 50μ" nickel
- T = 16. 30μ" selective gold over 50μ" nickel

