

# SOLDER TYPE D SUB PLUG



## 8000 SERIES Solder Type D-Sub

### Features

- Available in 9, 15, 23, 25, 37 and 50 Circuits
- Insulator Material: Glass filled polyester UL 94V-0
- Contact Material: Brass
- Different plating options are available
- Shell: Steel, tin plated as standard
- Optional: 4-40 UNC hexagonal standoff or clinch nuts
- Other options: Hoods, mounting screw and accessories
- For other options consult the Sales Office

### Dimensional Information

### Ordering and Dimensional Information

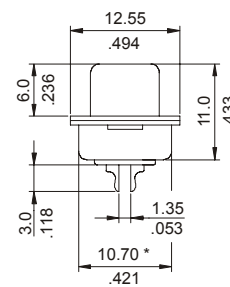
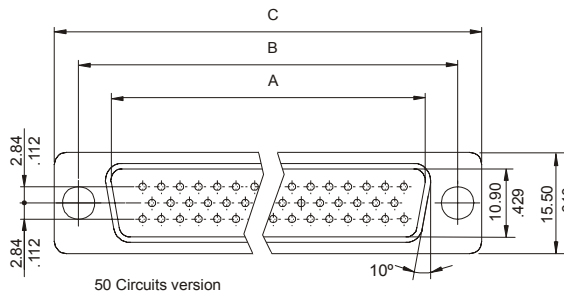
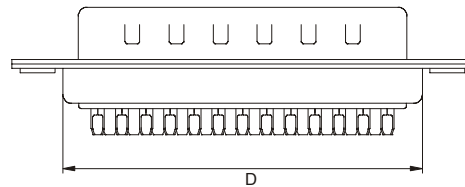
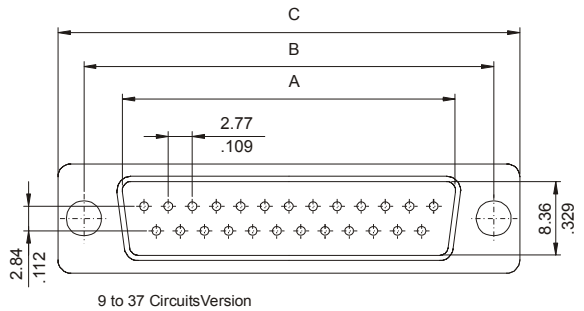
Circuit Size	Part Number	Dimensions			
		A	B	C	D
9	8000 - T09C	16.92 (0.666)	24.99 (0.984)	30.81 (1.213)	19.23 (0.757)
15	8000 - T15C	25.25 (0.994)	33.32 (1.312)	39.14 (1.541)	27.56 (1.085)
23	8000 - T23C	35.92 (1.414)	44.28 (1.743)	50.56 (1.991)	38.38 (1.511)
25	8000 - T25C	38.96 (1.534)	47.04 (1.852)	53.04 (2.088)	41.28 (1.625)
37	8000 - T37C	55.42 (2.182)	63.50 (2.500)	69.32 (2.729)	57.73 (2.273)
50	8000 - T50C	52.81 (2.079)	61.11 (2.406)	66.93 (2.635)	55.12 (2.170)

### T = Contact Plating

- T = 3. Gold flash over 50µ" nickel.
- T = 4. 10µ" gold over 50µ" nickel
- T = 5. 15µ" gold over 50µ" nickel
- T = 6. 30µ" gold over 50µ" nickel

### C = Hardware Options

- C = 1. Standard with 3.05mm(.012") dia. mount hole
- C = 2. Version T2
- C = 3. Version T4
- C = 4. Version D2



\* For 50 circuits this dimension is 13.50 mm.

