

# SINGLE ROW FEMALE IDC SOCKET

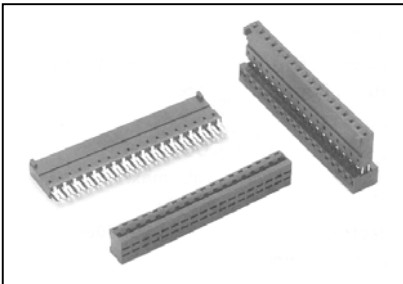
## 2344 SERIES 2.54mm (0.100") Centre Flat Cable. Narrow Type

### Features

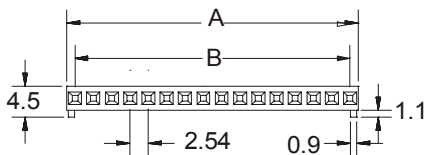
- Available in 2 through 20 circuits
- Housing Material: PBT, glass reinforced, rated UL 94V-0
- Contact Material: Phosphor bronze
- Different plating options are available
- Contact Resistance: 30 mΩ maximum
- Current Rating: 1 Amp. DC
- Terminated with 2.54mm pitch flat ribbon cable 24-26 AWG (Type A) or discrete wire (Type B)
- Mating Suggestion: 2345 and 2346 series

### Dimensional Information

### Ordering and Dimensional Information

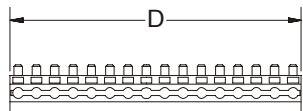
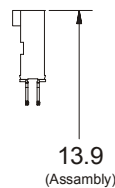
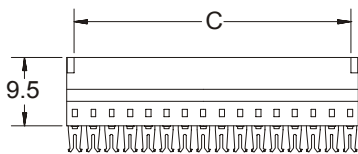


Circuit Size	Part Number		Dimensions			
	Type A	Type B	A	B	C	D
02	2344-T020	2344-T021	4.72(0.185)	2.54(0.100)	2.52(0.092)	5.02(0.197)
03	2344-T030	2344-T031	7.26(0.285)	5.08(0.200)	5.06(0.192)	7.56(0.297)
04	2344-T040	2344-T041	9.80(0.385)	7.62(0.300)	7.60(0.292)	10.10(0.397)
05	2344-T050	2344-T051	12.34(0.485)	10.16(0.400)	10.14(0.399)	12.64(0.497)
06	2344-T060	2344-T061	14.88(0.585)	12.70(0.500)	12.68(0.499)	15.18(0.597)
07	2344-T070	2344-T071	17.42(0.685)	15.24(0.600)	15.22(0.599)	17.72(0.697)
08	2344-T080	2344-T081	19.96(0.785)	17.78(0.700)	17.76(0.699)	20.26(0.797)
09	2344-T090	2344-T091	22.50(0.885)	20.32(0.800)	20.30(0.799)	22.80(0.897)
10	2344-T100	2344-T101	25.04(0.985)	22.86(0.900)	22.84(0.899)	25.34(0.997)
11	2344-T110	2344-T111	27.58(1.085)	25.40(1.000)	25.38(0.999)	27.88(1.097)
12	2344-T120	2344-T121	30.12(1.185)	27.94(1.100)	27.92(1.099)	30.42(1.197)
13	2344-T130	2344-T131	32.66(1.285)	30.48(1.200)	30.46(1.199)	32.96(1.297)
14	2344-T140	2344-T141	35.20(1.385)	33.02(1.300)	33.00(1.299)	35.50(1.397)
15	2344-T150	2344-T151	37.74(1.485)	35.56(1.400)	35.54(1.399)	38.04(1.497)
16	2344-T160	2344-T161	40.28(1.585)	38.10(1.500)	38.08(1.499)	40.58(1.597)
17	2344-T170	2344-T171	42.82(1.685)	40.64(1.600)	40.62(1.599)	43.12(1.697)
18	2344-T180	2344-T181	45.36(1.785)	43.18(1.700)	43.16(1.699)	45.66(1.797)
19	2344-T190	2344-T191	47.90(1.885)	45.72(1.800)	45.70(1.799)	48.20(1.897)
20	2344-T200	2344-T201	50.44(1.985)	48.26(1.900)	48.24(1.899)	50.74(1.997)

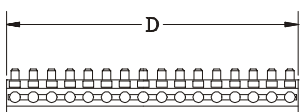
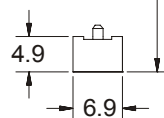


### T = Contact Plating

- T = 2. Tin plated
- T = 3. Gold flash over 50μ" nickel  
Recommended Finish
- T = 5. 15μ" gold over 50μ" nickel
- T = 6. 30μ" gold over 50μ" nickel



Type A (Flat Cable)



Type B (Wire)