

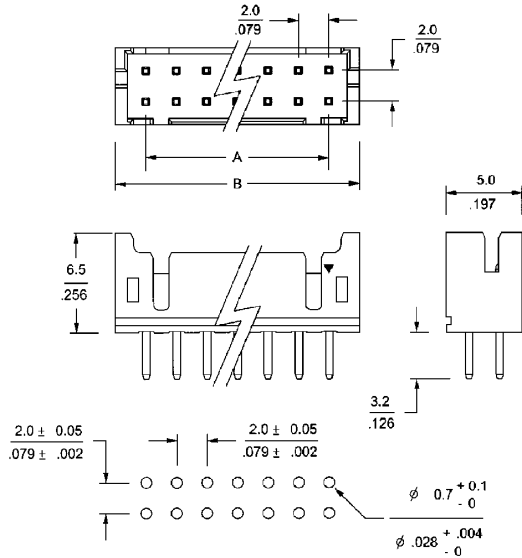
DUAL ROW POLARISED STRAIGHT HEADER

2267 SERIES 2.00mm (0.079") PCB solder

Features

- Available in 10 through 32 circuits
- Material : Nylon 6/6 UL 94V-0
- Completely polarised and protected
- 0.50 mm square pin Tinned brass
- Mates with female header 2265 series
- Low profile

Dimensional Information:



Ordering and Dimensional Information:

| Circuit Size | Part Number | Dimensions | |
|--------------|-------------|--------------|--------------|
| | | A | B |
| 10 | 2267- 2101 | 8.00(0.315) | 12.00(0.472) |
| 12 | 2267- 2121 | 10.00(0.394) | 14.00(0.551) |
| 14 | 2267- 2141 | 12.00(0.472) | 16.00(0.630) |
| 16 | 2267- 2161 | 14.00(0.551) | 18.00(0.709) |
| 18 | 2267- 2181 | 16.00(0.630) | 20.00(0.787) |
| 20 | 2267- 2201 | 18.00(0.709) | 22.00(0.866) |
| 22 | 2267- 2221 | 20.00(0.787) | 24.00(0.945) |
| 24 | 2267- 2241 | 22.00(0.866) | 26.00(1.024) |
| 26 | 2267- 2261 | 24.00(0.945) | 28.00(1.102) |
| 28 | 2267- 2281 | 26.00(1.024) | 30.00(1.181) |
| 30 | 2267- 2301 | 28.00(1.102) | 32.00(1.260) |
| 32 | 2267- 2321 | 30.00(1.181) | 34.00(1.339) |

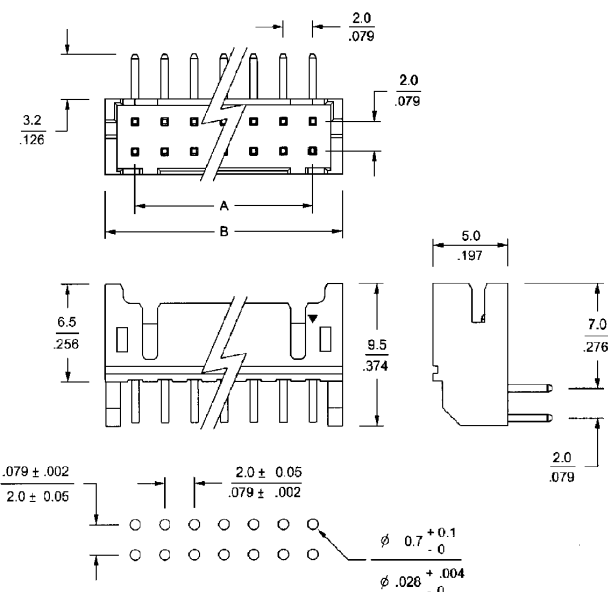
D/ROW POLARISED RIGHT ANGLE HEADER

2268 SERIES 2.00mm (0.079") PCB solder

Features

- Available in 10 through 32 circuits
- Material : Nylon 6/6 UL 94V-0
- Completely polarised and protected
- 0.50 mm square pin Tinned brass
- Mates with female header 2265 series
- Low profile

Dimensional Information:



Ordering and Dimensional Information:

| Circuit Size | Part Number | Dimensions | |
|--------------|-------------|--------------|--------------|
| | | A | B |
| 10 | 2268- 2101 | 8.00(0.315) | 12.00(0.472) |
| 12 | 2268- 2121 | 10.00(0.394) | 14.00(0.551) |
| 14 | 2268- 2141 | 12.00(0.472) | 16.00(0.630) |
| 16 | 2268- 2161 | 14.00(0.551) | 18.00(0.709) |
| 18 | 2268- 2181 | 16.00(0.630) | 20.00(0.787) |
| 20 | 2268- 2201 | 18.00(0.709) | 22.00(0.866) |
| 22 | 2268- 2221 | 20.00(0.787) | 24.00(0.945) |
| 24 | 2268- 2241 | 22.00(0.866) | 26.00(1.024) |
| 26 | 2268- 2261 | 24.00(0.945) | 28.00(1.102) |
| 28 | 2268- 2281 | 26.00(1.024) | 30.00(1.181) |
| 30 | 2268- 2301 | 28.00(1.102) | 32.00(1.260) |
| 32 | 2268- 2321 | 30.00(1.181) | 34.00(1.339) |