

# 2.54mm DUAL ROW FEMALE SMT SOCKET

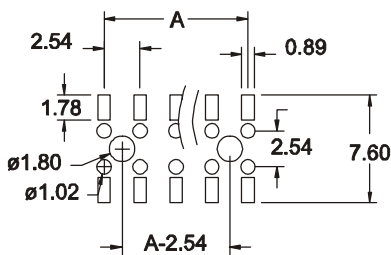
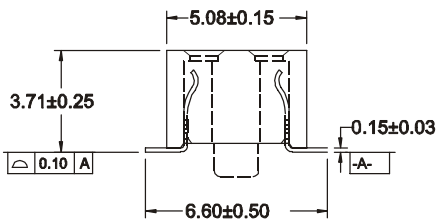
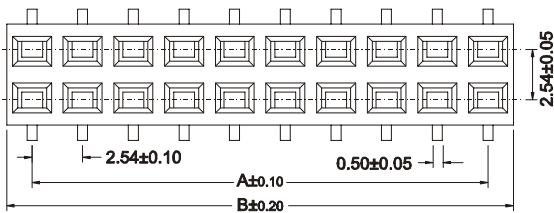


## 2204 SERIES 2.54 X 2.54mm (0.100 X 0.100") Low Profile

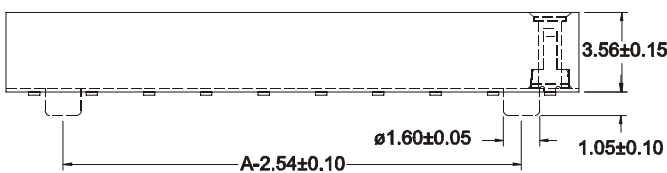
### Features

- Available in 4 through 80 circuits
- Housing Material: L.C.P UL 94V-0
- Mates with 2.54mm pitch and 0.64mm pin headers
- Low profile 3.71mm and high density PCB socket
- Top and bottom entry
- High quality dual beam phosphor bronze contacts
- Designed for low profile board to board interconnection
- Optional: PCB fixing post
- For other options consult the Sales Office

### Dimensional Information



RECOMMENDED HOLE PATTERN



### Ordering and Dimensional Information

| Circuits | Part Number         |                  | Dimensions   |               |
|----------|---------------------|------------------|--------------|---------------|
|          | Without fixing post | With fixing post | A            | B             |
| 04       | 2204-T041E          | 2204-T042E       | 2,54(0,100)  | 5,08(0,200)   |
| 06       | 2204-T061E          | 2204-T062E       | 5,08(0,200)  | 7,62(0,300)   |
| 08       | 2204-T081E          | 2204-T082E       | 7,62(0,300)  | 10,16(0,400)  |
| 10       | 2204-T101E          | 2204-T102E       | 10,16(0,400) | 12,70(0,500)  |
| 12       | 2204-T121E          | 2204-T122E       | 12,70(0,500) | 15,24(0,600)  |
| 14       | 2204-T141E          | 2204-T142E       | 15,24(0,600) | 17,78(0,700)  |
| 16       | 2204-T161E          | 2204-T162E       | 17,78(0,700) | 20,32(0,800)  |
| 18       | 2204-T181E          | 2204-T182E       | 20,32(0,800) | 22,86(0,900)  |
| 20       | 2204-T201E          | 2204-T202E       | 22,86(0,900) | 25,40(1,000)  |
| 22       | 2204-T221E          | 2204-T222E       | 25,40(1,000) | 27,94(1,100)  |
| 24       | 2204-T241E          | 2204-T242E       | 27,94(1,100) | 30,48(1,200)  |
| 26       | 2204-T261E          | 2204-T262E       | 30,48(1,200) | 33,02(1,300)  |
| 28       | 2204-T281E          | 2204-T282E       | 33,02(1,300) | 35,56(1,400)  |
| 30       | 2204-T301E          | 2204-T302E       | 35,56(1,400) | 38,10(1,500)  |
| 32       | 2204-T321E          | 2204-T322E       | 38,10(1,500) | 40,64(1,600)  |
| 34       | 2204-T341E          | 2204-T342E       | 40,64(1,600) | 43,18(1,700)  |
| 36       | 2204-T361E          | 2204-T362E       | 43,18(1,700) | 45,72(1,800)  |
| 38       | 2204-T381E          | 2204-T382E       | 45,72(1,800) | 48,26(1,900)  |
| 40       | 2204-T401E          | 2204-T402E       | 48,26(1,900) | 50,80(2,000)  |
| 42       | 2204-T421E          | 2204-T422E       | 50,80(2,000) | 53,34(2,100)  |
| 44       | 2204-T441E          | 2204-T442E       | 53,34(2,100) | 55,88(2,200)  |
| 46       | 2204-T461E          | 2204-T462E       | 55,88(2,200) | 58,42(2,300)  |
| 48       | 2204-T481E          | 2204-T482E       | 58,42(2,300) | 60,96(2,400)  |
| 50       | 2204-T501E          | 2204-T502E       | 60,96(2,400) | 63,50(2,500)  |
| 52       | 2204-T521E          | 2204-T522E       | 63,50(2,500) | 66,04(2,600)  |
| 54       | 2204-T541E          | 2204-T542E       | 66,04(2,600) | 68,58(2,700)  |
| 56       | 2204-T561E          | 2204-T562E       | 68,58(2,700) | 71,12(2,800)  |
| 58       | 2204-T581E          | 2204-T582E       | 71,12(2,800) | 73,66(2,900)  |
| 60       | 2204-T601E          | 2204-T602E       | 73,66(2,900) | 76,20(3,000)  |
| 62       | 2204-T621E          | 2204-T622E       | 76,20(3,000) | 78,74(3,100)  |
| 64       | 2204-T641E          | 2204-T642E       | 78,74(3,100) | 81,28(3,200)  |
| 66       | 2204-T661E          | 2204-T662E       | 81,28(3,200) | 83,82(3,300)  |
| 68       | 2204-T681E          | 2204-T682E       | 83,82(3,300) | 86,36(3,400)  |
| 70       | 2204-T701E          | 2204-T702E       | 86,36(3,400) | 88,90(3,500)  |
| 72       | 2204-T721E          | 2204-T722E       | 88,90(3,500) | 91,44(3,600)  |
| 74       | 2204-T741E          | 2204-T742E       | 91,44(3,600) | 93,98(3,700)  |
| 76       | 2204-T761E          | 2204-T762E       | 93,98(3,700) | 96,52(3,800)  |
| 78       | 2204-T781E          | 2204-T782E       | 96,52(3,800) | 99,06(3,900)  |
| 80       | 2204-T801E          | 2204-T802E       | 99,06(3,900) | 101,60(4,000) |

### T = Contact Plating

- T = 14. 10µ" Gold Plated on contact area  
Recommended Finish

### E = Packing Options

- E = 5. Metal Pad + Tube
- E = 6. Metal Pad + Reel