

CRIMP TERMINAL SOCKET

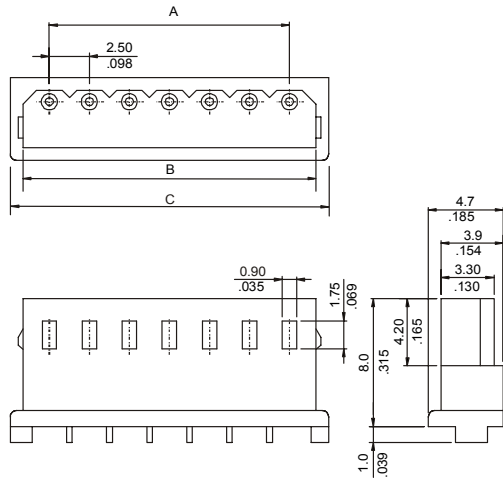


2535 SERIES 2.50mm (0.098") Socket

Features

- Available in 2 through 15 circuits
- Mates with 2536 and 2537 headers
- Material: Nylon 6/6 UL 94V-0
- Accepts 2538 series crimp terminal
- Low profile
- Polarised with locking ribs

Dimensional Information



Ordering and Dimensional Information

Circuit Size	Part Number	Dimensions		
		A	B	C
02	2535-2022	2,50(0,098)	5,80(0,228)	7,50 (0,295)
03	2535-2032	5,00(0,197)	8,30(0,327)	10,00 (0,394)
04	2535-2042	7,50(0,295)	10,80(0,425)	12,50 (0,492)
05	2535-2052	10,00(0,394)	13,30(0,524)	15,00 (0,591)
06	2535-2062	12,50(0,492)	15,80(0,622)	17,50 (0,689)
07	2535-2072	15,00(0,591)	18,30(0,709)	20,00 (0,787)
08	2535-2082	17,50(0,689)	20,80(0,189)	22,50 (0,886)
09	2535-2092	20,00(0,787)	23,30(0,917)	25,00 (0,984)
10	2535-2102	22,50(0,886)	25,80(1,016)	27,60 (1,087)
11	2535-2112	25,00(0,984)	28,30(1,114)	30,10 (1,185)
12	2535-2122	27,50(1,083)	30,80(1,213)	32,60 (1,283)
13	2535-2132	30,00(1,181)	33,30(1,311)	35,10 (1,382)
14	2535-2142	32,50(1,280)	35,80(1,409)	37,60 (1,480)
15	2535-2152	35,00(1,378)	38,30(1,508)	40,10 (1,579)

CRIMP TERMINAL

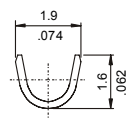
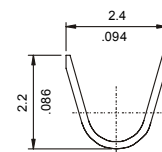
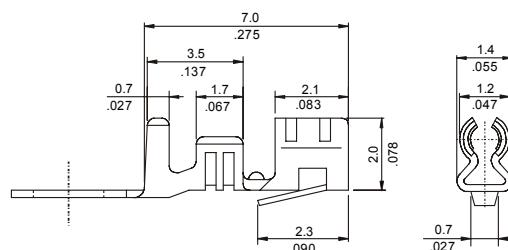
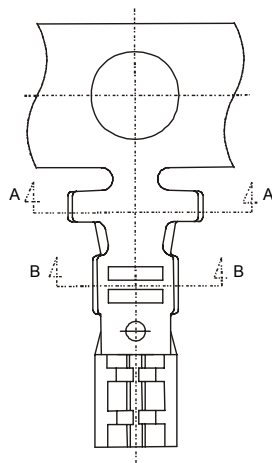


2538 SERIES 2.50mm Crimp Terminal

Features

- Used in 2535 series socket
- Accommodates wire ranges AWG 22-28
- Material : Phosphor bronze
- Mates with 0.70mm(0.028") round pin
- Plating: Tin plated
- Insulation Diameter: 1.50mm(0.059") Max.

Dimensional Information



Ordering and Dimensional Information

Reel Quantity	Part Number	Material	Wire Ranges	Insulation Diameter
10,000 Pcs (Reel)	2538 - 2002	Phosphor Bronze	AWG 22 – 28	1,50(0,059") Max.
Loose Piece	2538 - 2001	Phosphor Bronze	AWG 22 – 28	1,50(0,059") Max.