

DUAL ROW POLARISED STRAIGHT HEADER

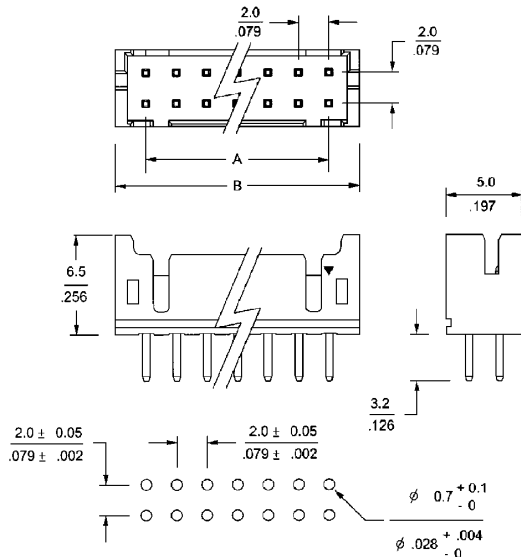


2267 SERIES 2.00mm (0.079") PCB solder

Features

- Available in 10 through 32 circuits
- Material : Nylon 6/6 UL 94V-0
- Completely polarised and protected
- 0.50 mm square pin Tinned brass
- Mates with female header 2265 series
- Low profile

Dimensional Information:



Ordering and Dimensional Information:

Circuit Size	Part Number	Dimensions	
		A	B
10	2267- 2101	8.00(0.315)	12.00(0.472)
12	2267- 2121	10.00(0.394)	14.00(0.551)
14	2267- 2141	12.00(0.472)	16.00(0.630)
16	2267- 2161	14.00(0.551)	18.00(0.709)
18	2267- 2181	16.00(0.630)	20.00(0.787)
20	2267- 2201	18.00(0.709)	22.00(0.866)
22	2267- 2221	20.00(0.787)	24.00(0.945)
24	2267- 2241	22.00(0.866)	26.00(1.024)
26	2267- 2261	24.00(0.945)	28.00(1.102)
28	2267- 2281	26.00(1.024)	30.00(1.181)
30	2267- 2301	28.00(1.102)	32.00(1.260)
32	2267- 2321	30.00(1.181)	34.00(1.339)

D/ROW POLARISED RIGHT ANGLE HEADER

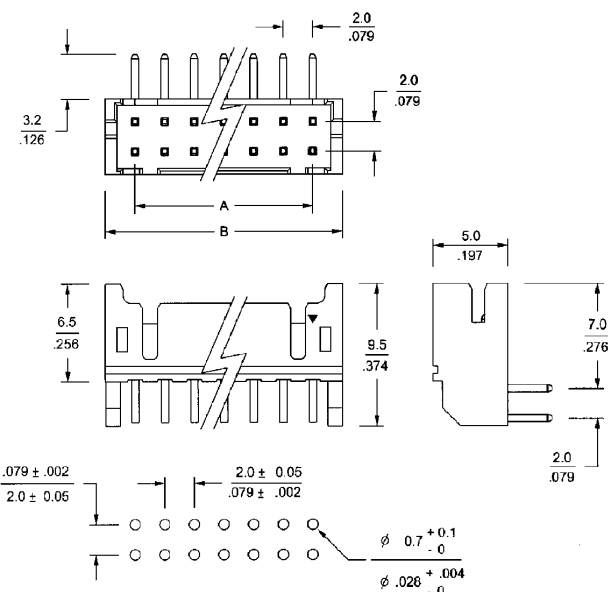


2268 SERIES 2.00mm (0.079") PCB solder

Features

- Available in 10 through 32 circuits
- Material : Nylon 6/6 UL 94V-0
- Completely polarised and protected
- 0.50 mm square pin Tinned brass
- Mates with female header 2265 series
- Low profile

Dimensional Information:



Ordering and Dimensional Information:

Circuit Size	Part Number	Dimensions	
		A	B
10	2268- 2101	8.00(0.315)	12.00(0.472)
12	2268- 2121	10.00(0.394)	14.00(0.551)
14	2268- 2141	12.00(0.472)	16.00(0.630)
16	2268- 2161	14.00(0.551)	18.00(0.709)
18	2268- 2181	16.00(0.630)	20.00(0.787)
20	2268- 2201	18.00(0.709)	22.00(0.866)
22	2268- 2221	20.00(0.787)	24.00(0.945)
24	2268- 2241	22.00(0.866)	26.00(1.024)
26	2268- 2261	24.00(0.945)	28.00(1.102)
28	2268- 2281	26.00(1.024)	30.00(1.181)
30	2268- 2301	28.00(1.102)	32.00(1.260)
32	2268- 2321	30.00(1.181)	34.00(1.339)