

5.08mm CRIMP TYPE SOCKET

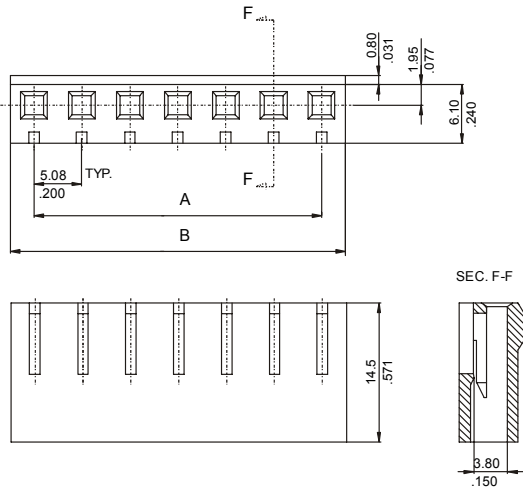


5080-A SERIES 5.08mm (0.200") With Locking Ramp

Features

- Available in 2 through 16 circuits
- Polarised with locking ramp
- Material: Nylon 6/6 UL 94V-0
- Accepts 3079, 3032 and 3979 Crimp terminal
- Mates with 5016, 5017, 5018, 5086, 5087, 5082, 5083, 5088, 5004, 5005 and 5006 series Headers
- For **GWT** option (Glow Wire Test Approval), please Add **E** at the end of Part Number (Example: 5080-XXXXE)

Dimensional Information



Ordering and Dimensional Information

Circuit Size	Part Number	Dimensions	
		A	B
02	5080-2021	5,08(0,200)	10,20(0,402)
03	5080-2031	10,16(0,400)	15,20(0,598)
04	5080-2041	15,24(0,600)	20,30(0,799)
05	5080-2051	20,32(0,800)	25,40(1,000)
06	5080-2061	25,40(1,000)	30,50(1,201)
07	5080-2071	30,48(1,200)	35,60(1,402)
08	5080-2081	35,56(1,400)	40,60(1,598)
09	5080-2091	40,64(1,600)	45,70(1,799)
10	5080-2101	45,72(1,800)	50,80(2,000)
11	5080-2111	50,80(2,000)	55,90(2,201)
12	5080-2121	55,88(2,200)	61,00(2,402)
13	5080-2131	60,96(2,400)	66,00(2,598)
14	5080-2141	66,04(2,600)	71,10(2,799)
15	5080-2151	71,12(2,800)	76,20(3,000)
16	5080-2161	76,20(3,000)	81,30(3,201)

5.08mm CRIMP TYPE SOCKET

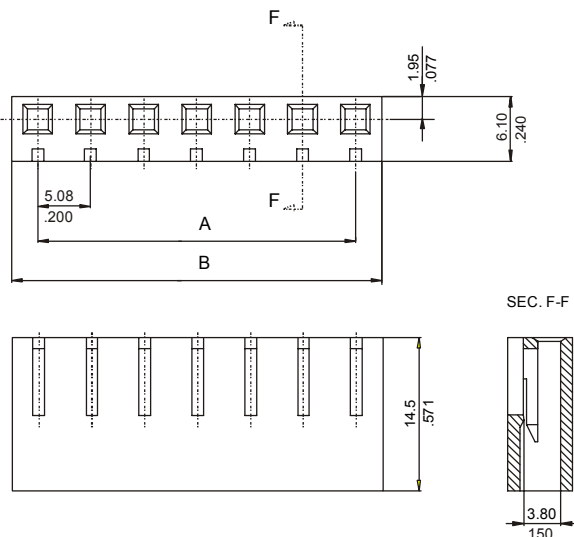


5080-B SERIES 5.08mm (0.200") Without Locking Ramp

Features

- Available in 2 through 16 circuits
- Without locking ramp
- Material: Nylon 6/6 UL 94V-0
- Accepts 3079, 3032 and 3979 Crimp terminal
- Mates with 5086, 5087, 5088, and 5084 series headers
- For **GWT** option (Glow Wire Test Approval), please Add **E** at the end of Part Number (Example: 5080-XXXXE)

Dimensional Information



Ordering and Dimensional Information

Circuit Size	Part Number	Dimensions	
		A	B
02	5080-3021	5,08(0,200)	10,20(0,402)
03	5080-3031	10,16(0,400)	15,20(0,598)
04	5080-3041	15,24(0,600)	20,30(0,799)
05	5080-3051	20,32(0,800)	25,40(1,000)
06	5080-3061	25,40(1,000)	30,50(1,201)
07	5080-3071	30,48(1,200)	35,60(1,402)
08	5080-3081	35,56(1,400)	40,60(1,598)
09	5080-3091	40,64(1,600)	45,70(1,799)
10	5080-3101	45,72(1,800)	50,80(2,000)
11	5080-3111	50,80(2,000)	55,90(2,201)
12	5080-3121	55,88(2,200)	61,00(2,402)
13	5080-3131	60,96(2,400)	66,00(2,598)
14	5080-3141	66,04(2,600)	71,10(2,799)
15	5080-3151	71,12(2,800)	76,20(3,000)
16	5080-3161	76,20(3,000)	81,30(3,201)