

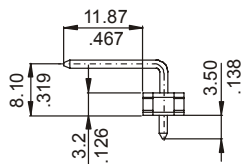
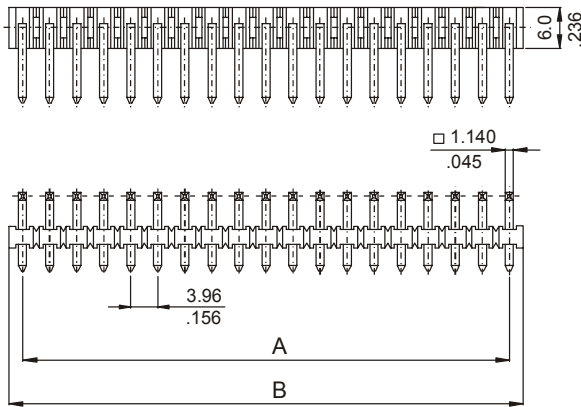
# SINGLE ROW RIGHT ANGLE HEADER

## 3988 SERIES. 3.96mm(0.156"). Square Pin. For PCB Solder

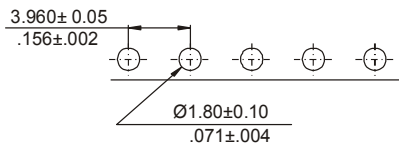
### Features

- Available in 2 through 20 circuits
- Insulator Material: Nylon 6/6 UL 94V-0
- 1.14mm(.045") tin plated square pin in copper alloy
- With standoff minimise flux retention
- Mates with 3940, 3970, 3971 and 3972 series socket and PCB connectors
- Pin omit options are available in any circuits

### Dimensional Information



### RECOMMENDED HOLE PATTERN



### Ordering and Dimensional Information

Circuit Size	Part Number	Dimensions	
		A	B
02	<b>3988-2021</b>	3,96(0,156)	7,92(0,312)
03	<b>3988-2031</b>	7,92(0,312)	11,88(0,468)
04	<b>3988-2041</b>	11,88(0,468)	15,84(0,624)
05	<b>3988-2051</b>	15,84(0,624)	19,80(0,780)
06	<b>3988-2061</b>	19,80(0,780)	23,76(0,935)
07	<b>3988-2071</b>	23,76(0,935)	27,72(1,090)
08	<b>3988-2081</b>	27,72(1,091)	31,68(1,247)
09	<b>3988-2091</b>	31,68(1,247)	35,64(1,403)
10	<b>3988-2101</b>	35,64(1,403)	39,60(1,559)
11	<b>3988-2111</b>	39,60(1,559)	43,56(1,715)
12	<b>3988-2121</b>	43,56(1,715)	47,52(1,871)
13	<b>3988-2131</b>	47,52(1,871)	51,48(2,027)
14	<b>3988-2141</b>	51,48(2,027)	55,44(2,183)
15	<b>3988-2151</b>	55,44(2,183)	59,40(2,339)
16	<b>3988-2161</b>	59,40(2,339)	63,36(2,494)
17	<b>3988-2171</b>	63,36(2,494)	67,32(2,650)
18	<b>3988-2181</b>	67,32(2,650)	71,28(2,806)
19	<b>3988-2191</b>	71,28(2,806)	75,24(2,962)
20	<b>3988-2201</b>	75,24(2,962)	79,20(3,118)

