

# WIRE HOLDER CONNECTOR



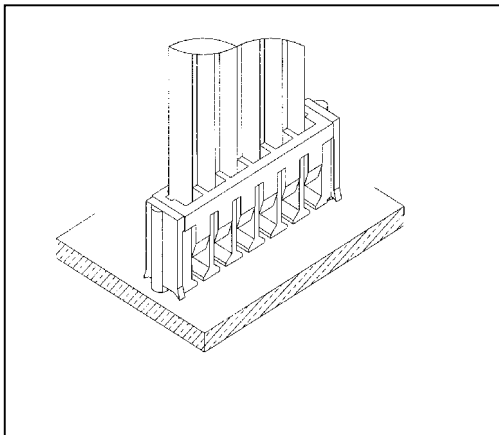
## 2423 SERIES 2.50mm (0.098"). For PCB Insert

### Features

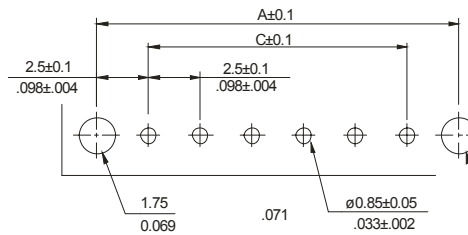
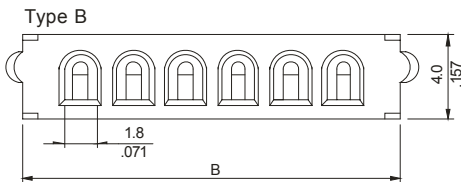
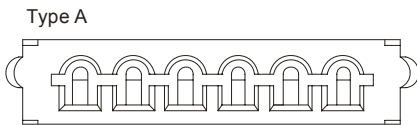
- Available in 2 to 15 circuits
- Material: Glass filled nylon 6/6 UL94V-0
- Colour: Natural
- Applicable PC board thickness: 1.60mm
- Accommodates wires ranges AWG 22 - 28

### Dimensional Information

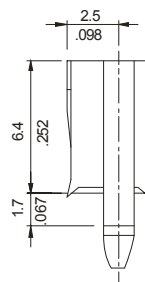
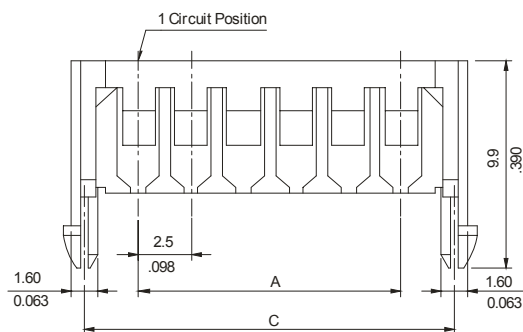
### Ordering and Dimensional Information



Circuit Size	Part Number		Dimensions		
	Con. Type A	Con. Type B	A	B	C
02	2423-2021	2423-2022	2,50(0,098)	7,80 (0,307)	7,50(0,295)
03	2423-2031	2423-2032	5,00(0,197)	10,30 (0,405)	10,00(0,394)
04	2423-2041	2423-2042	7,50(0,295)	12,80 (0,504)	12,50(0,492)
05	2423-2051	2423-2052	10,00(0,394)	15,30 (0,602)	15,00(0,591)
06	2423-2061	2423-2062	12,50(0,492)	17,80 (0,701)	17,50(0,689)
07	2423-2071	2423-2072	15,00(0,591)	20,30 (0,799)	20,00(0,787)
08	2423-2081	2423-2082	17,50(0,689)	22,80 (0,898)	22,52(0,886)
10	2423-2101	2423-2102	22,50(0,886)	27,80 (1,094)	27,50 (1,083)
11	2423-2111	2423-2112	25,00(0,984)	30,30 (1,193)	30,00 (1,182)
12	2423-2121	2423-2122	27,50(1,083)	32,80 (1,291)	32,50(1,280)
13	2423-2131	2423-2132	30,00(1,181)	35,30 (1,390)	35,00(1,378)
14	2423-2141	2423-2142	32,50(1,280)	37,80 (1,488)	37,50(1,476)
15	2423-2151	2423-2152	35,00(1,378)	40,30 (1,587)	40,00(1,575)



Recommended Hole Pattern



$A = 2.5 \times N^{\circ}$  of spaces  
 $B = A + 5.3$   
 $C = A + 5.0$

Accommodated Wire Size: AWG #24-#26			
Discrete Wire	Notched Flat Cable	Split Ribbon Cable	Stripped Flat Cabl
Connector Type B	Connector Type B	Connector Type B	Connector Type A