

BOARD IN CONNECTOR

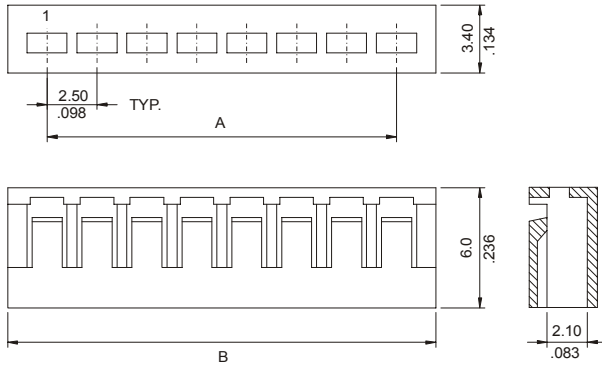


2412 SERIES 2.50mm(0.098") For PCB Solder

Features

- Available in 2 through 15 circuits
- Material: Nylon 6/6 UL 94V-0
- Applicable PC board thickness: 1.60mm
- Accepts 2413 crimp terminal
- Low profile

Dimensional Information



Ordering and Dimensional Information

Circuit Size	Part Number	Dimensions	
		A	B
02	2412-2021	2,50(0,098)	5,70(0,224)
03	2412-2031	5,00(0,197)	8,20 (0,323)
04	2412-2041	7,50(0,295)	10,70 (0,421)
05	2412-2051	10,00(0,394)	13,20 (0,520)
06	2412-2061	12,50(0,492)	15,70 (0,618)
07	2412-2071	15,00(0,591)	18,20 (0,717)
08	2412-2081	17,50(0,689)	20,70 (0,815)
09	2412-2091	20,00(0,787)	23,20 (0,913)
10	2412-2101	22,50(0,886)	25,70 (1,012)
11	2412-2111	25,00(0,984)	28,20 (1,110)
12	2412-2121	27,50(1,083)	30,70 (1,209)
13	2412-2131	30,00(1,181)	33,20 (1,307)
14	2412-2141	32,50(1,280)	35,70 (1,406)
15	2412-2151	35,00(1,378)	38,20 (1,504)

BOARD IN CRIMP TERMINAL



2413 SERIES 2.50mm For PCB Solder

Features

- Mates with 2412 series socket
- Accommodates wires ranges AWG 22-28
- Material: Pre-finned brass
- Insulation diameter: 2.00mm(0.079") Maximum
- Available in Straight or Right angle version

Dimensional Information

Ordering and Dimensional Information

Type	Part Number	Material	Wire Ranges	Insulation Diameter
Straight	2413- 2000	Pre-finned brass	AWG 22 – 28	2,00 (0,079) Max.
Right Angle	2413 - 2002	Pre-finned brass	AWG 22 – 28	2,00 (0,079) Max.