

1.00mm VERTICAL ZIF SMT CONNECTOR

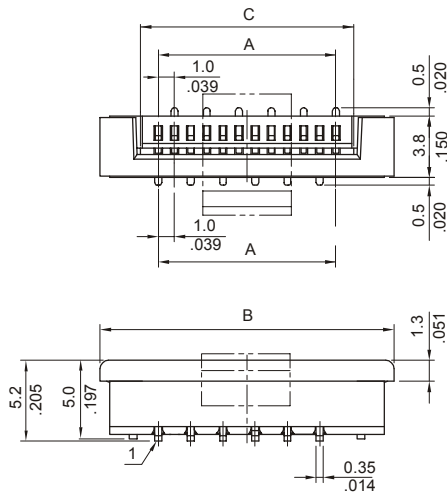


1765 SERIES. 1.00mm(0.039"). For PCB solder

Features

- Available in 4 through 32 circuits
- Insulator Material: Glass filled Nylon 6T UL 94V-0
- Contact Material: Phosphor bronze
- Zero insertion force and high contact pressure
- Applicable FPC and FFC: Thickness 0.30mm(.012")
- Optional: Reel Packing, Standard Tube

Dimensional Information

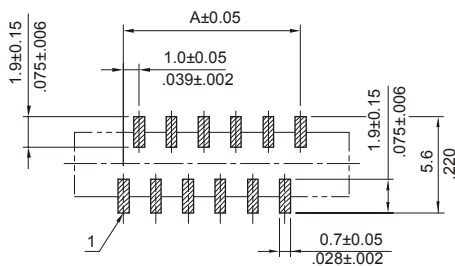
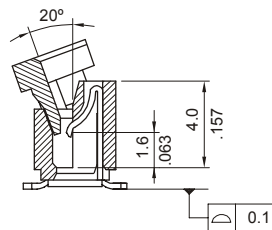
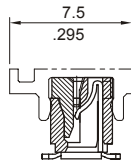


DIMENSIONS

$$A = 1.00 \times \frac{\text{N}^\circ \text{ Circuits}}{2} - 1$$

$$B = A + 7.2$$

$$C = A + 2.1$$

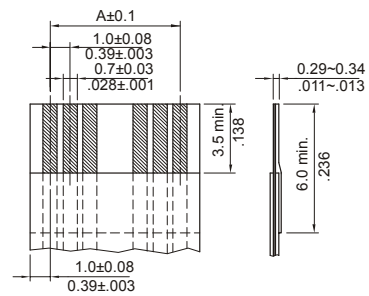


RECOMMENDED HOI F PATTERN

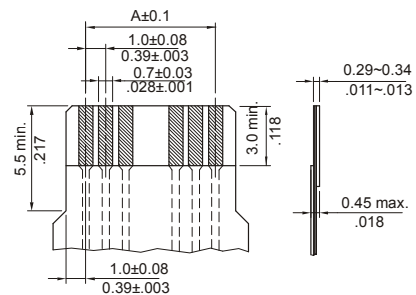
Ordering and Dimensional Information

Circuit Size	Part Number	Dimensions		
		A	B	C
04	1765-2041	3,00(0,118)	10,20(0,402)	5,20(0,205)
05	1765-2051	4,00(0,157)	11,20(0,441)	6,20(0,244)
06	1765-2061	5,00(0,197)	12,20(0,480)	7,20(0,283)
07	1765-2071	6,00(0,236)	13,20(0,520)	8,20(0,323)
08	1765-2081	7,00(0,276)	14,20(0,559)	9,20(0,362)
09	1765-2091	8,00(0,315)	15,20(0,598)	10,20(0,402)
10	1765-2101	9,00(0,354)	16,20(0,638)	11,20(0,441)
11	1765-2111	10,00(0,394)	17,20(0,677)	12,20(0,480)
12	1765-2121	11,00(0,433)	18,20(0,717)	13,20(0,520)
13	1765-2131	12,00(0,472)	19,20(0,756)	14,20(0,559)
14	1765-2141	13,00(0,512)	20,20(0,795)	15,20(0,598)
15	1765-2151	14,00(0,551)	21,20(0,835)	16,20(0,638)
16	1765-2161	15,00(0,591)	22,20(0,874)	17,20(0,677)
17	1765-2171	16,00(0,630)	23,20(0,913)	18,20(0,717)
18	1765-2181	17,00(0,669)	24,20(0,953)	19,20(0,756)
19	1765-2191	18,00(0,709)	25,20(0,992)	20,20(0,795)
20	1765-2201	19,00(0,748)	26,20(1,031)	21,20(0,835)
21	1765-2211	20,00(0,787)	27,20(1,071)	22,20(0,874)
22	1765-2221	21,00(0,827)	28,20(1,110)	23,20(0,913)
23	1765-2231	22,00(0,866)	29,20(1,150)	24,20(0,953)
24	1765-2241	23,00(0,906)	30,20(1,189)	25,20(0,992)
25	1765-2251	24,00(0,945)	31,20(1,228)	26,20(1,031)
26	1765-2261	25,00(0,984)	32,20(1,268)	27,20(1,071)
27	1765-2271	26,00(1,024)	33,20(1,307)	28,20(1,110)
28	1765-2281	27,00(1,063)	34,20(1,346)	29,20(1,150)
29	1765-2291	28,00(1,102)	35,20(1,386)	30,20(1,189)
30	1765-2301	29,00(1,142)	36,20(1,425)	31,20(1,228)
31	1765-2311	30,00(1,181)	37,20(1,465)	32,20(1,268)
32	1765-2321	31,00(1,220)	38,20(1,504)	33,20(1,307)

Nota: In case of connectors in reel (Automatic mounting), add an **R** at the end of code



ACCOMMODATED FFC



ACCOMMODATED

