

STACKED RIGHT ANGLE DIP SOLDER D-SUB

8091 SERIES PCB Solder Right Angle DIP Solder D-Sub

Features

- Different Connector Configurations
- Meets ATX Specification and Requirements
- Easy to use. High Reliability
- Insulation Material: Glass Filled Polyester UL 94V-0
- Contact Material: Phosphor Bronze
- Spring: Phosphor Bronze
- Current Rating: 3 Amp AC, DC
- Voltage Rating: 250V AC, DC
- Temperature Rating: -25°C to +105°C
- Contact Resistance: 20 mΩ min.
- Insulation Resistance: 5000 MΩ min.
- Withstanding Voltage: 1000 V AC/min.

Dimensional Information

(T) Plating Options

T = 3	Gold Flash over 50μ Nickel
T = 5	15μ" Gold over 50μ" Nickel
T = 6	30μ" Gold over 50μ" Nickel

(D) Connector Body Height Option

D=1	E = 15.88mm
D=2	E = 19.05mm
D=3	E = 22.86mm

(E) Screw Lock Variations

C = 1	Riveted Ground Hooks Pre-Loaded 4.40 UNC Hex Screws (standard)
C = 0	Riveted Ground Hooks with 4.40 UNC Thread

Ordering and Dimensional Information

(B) Circuit Size

1	= 9 to 9 Circuits
2	= 15 to 15 Circuits
3	= 25 to 25 Circuits
4	= 9 to 25 Circuits
5	= 25 to 9 Circuits
6	= 25 to 15 Circuits
7	= 37 to 37 Circuits

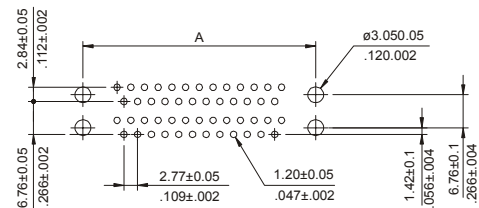
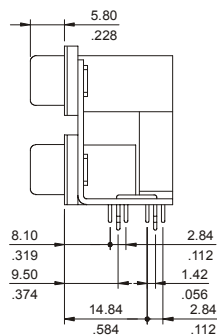
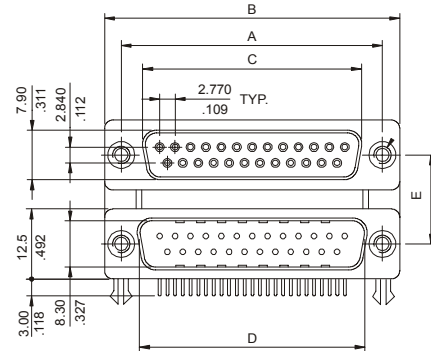
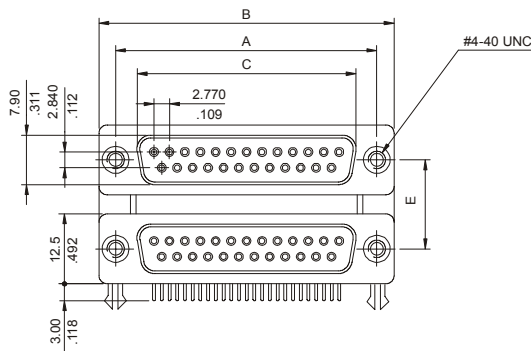
(C) Connector Configuration

	Upper Con.	Lower Con.
1	Receptacle	Receptacle
2	Plug	Receptacle
3	Receptacle	Plug
4	Plug	Plug

8091 – T B C D E Series

Ordering Information

T	Plating Options
B	Circuit Size
C	Connector Configuration
D	Connector Body Height Option
E	Screw Lock Variations



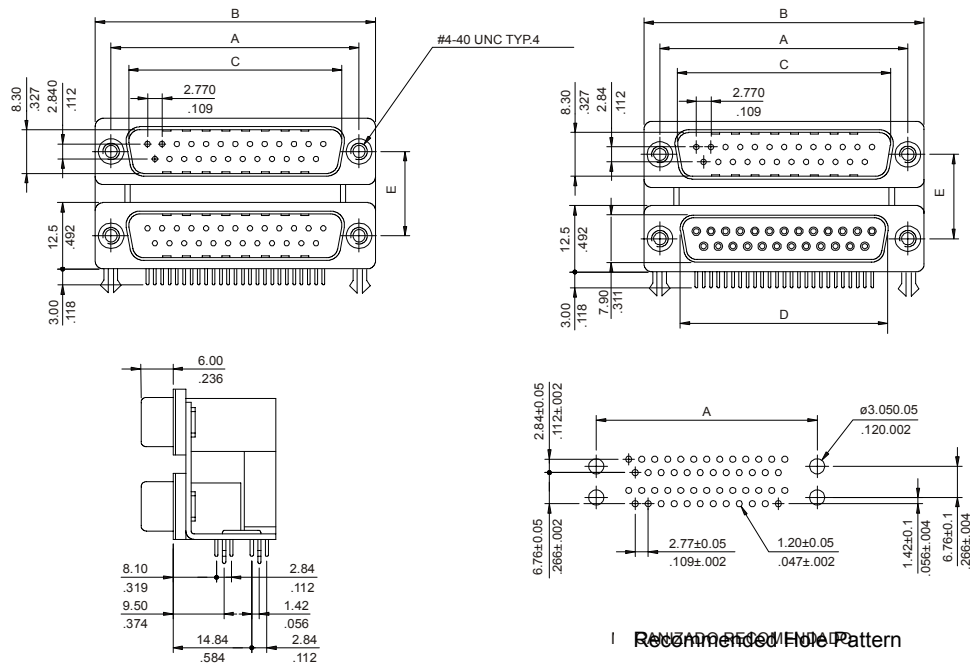
Recommended Hole Pattern
ECANIZADO RECOMENDADO

STACKED RIGHT ANGLE DIP SOLDER D-SUB

8091 SERIES For PCB Solder. Right Angle DIP Solder D-Sub

● Plug to Plug and Plug to socket

Part Number	Dim. A	Dim. B	Dim. C	Dim. D	Dim. E
8091 – T1*11 (9V)	24.99 (0.984)	30.80 (1.213)	16.92 (0.666)	16.92 (0.666)	15.880 (0.625)
8091 – T2*11 (15V)	33.32 (1.312)	39.10 (1.539)	25.25 (0.994)	25.25 (0.994)	
8091 – T3*11 (25V)	47.04 (1.852)	53.00 (2.087)	38.96 (1.534)	38.96 (1.534)	
8091 – T7*11 (37V)	63.50 (2.500)	69.40 (2.732)	55.42 (2.182)	55.42 (2.182)	19.050 (0.750)
8091 – T1*21 (9V)	25.00 (0.984)	30.80 (1.213)	16.92 (0.666)	16.92 (0.666)	
8091 – T2*21 (15V)	33.32 (1.312)	39.10 (1.539)	25.25 (0.994)	25.25 (0.994)	
8091 – T3*21 (25V)	47.04 (1.852)	53.00 (2.087)	38.96 (1.534)	38.96 (1.534)	22.860 (0.900)
8091 – T7*21 (37V)	63.50 (2.500)	69.40 (2.732)	55.42 (2.182)	55.42 (2.182)	
8091 – T1*31 (9V)	24.99 (0.984)	30.80 (1.213)	16.92 (0.666)	16.92 (0.666)	
8091 – T2*31 (15V)	33.32 (1.312)	39.10 (1.539)	25.25 (0.994)	25.25 (0.994)	22.860 (0.900)
8091 – T3*31 (25V)	47.04 (1.852)	53.00 (2.087)	38.96 (1.534)	38.96 (1.534)	
8091 – T7*31 (37V)	63.50 (2.500)	69.40 (2.732)	55.42 (2.182)	55.42 (2.182)	



● Socket to Socket and Socket to plug

Part Number	Dim. A	Dim. B	Dim. C	Dim. D	Dim. E
8091 – T1*11 (9V)	25.00 (0.984)	30.80 (1.213)	16.92 (0.666)	16.33 (0.643)	15.880 (0.625)
8091 – T2*11 (15V)	33.32 (1.312)	39.10 (1.539)	25.25 (0.994)	24.66 (0.971)	
8091 – T3*11 (25V)	47.04 (1.852)	53.00 (2.087)	38.96 (1.534)	38.38 (1.511)	
8091 – T7*11 (37V)	63.50 (2.500)	69.40 (2.732)	55.42 (2.182)	54.80 (2.157)	19.050 (0.750)
8091 – T1*21 (9V)	25.00 (0.984)	30.80 (1.213)	16.92 (0.666)	16.33 (0.643)	
8091 – T2*21 (15V)	33.32 (1.312)	39.10 (1.539)	25.25 (0.994)	24.66 (0.971)	
8091 – T3*21 (25V)	47.04 (1.852)	53.00 (2.087)	38.96 (1.534)	38.38 (1.511)	22.860 (0.900)
8091 – T7*21 (37V)	63.50 (2.500)	69.40 (2.732)	55.42 (2.182)	54.80 (2.157)	
8091 – T1*31 (9V)	24.99 (0.984)	30.80 (1.213)	16.92 (0.666)	16.33 (0.643)	
8091 – T2*31 (15V)	33.32 (1.312)	39.10 (1.539)	25.25 (0.994)	24.66 (0.971)	22.860 (0.900)
8091 – T3*31 (25V)	47.04 (1.852)	53.00 (2.087)	38.96 (1.534)	38.38 (1.511)	
8091 – T7*31 (37V)	63.50 (2.500)	69.40 (2.732)	55.42 (2.182)	54.80 (2.157)	