

# SHIELDED TOP ENTRY PCB JACK FCC-68

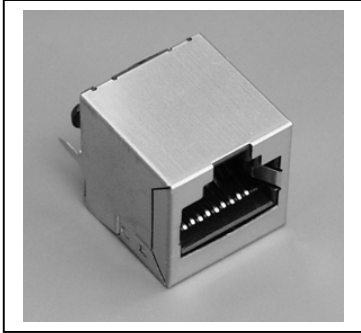


## 7648 SERIES For PCB solder Shielded PCB Jack

### Features

- Available in 8/8 and 10/10 circuits
- Mates with FCC-68 modular plugs
- Insulator Material: Glass filled polyester UL 94V-0
- Contact: Square 0.35 mm thickness
- Contacts: Golden phosphor bronze 0.35 mm square
- Gold plating over nickel in Contact Area.
- Tin plating over nickel in Solder Area
- Shielded Material: Bronze with nickel plated

### Dimensional Information



### Ordering and Dimensional Information

| Version | Part Number | Dimension A  |
|---------|-------------|--------------|
| 8/8     | 7648 – T881 | 2.75 (0.108) |
| 8/8     | 7648 – T882 | 3.25 (0.128) |
| 10/10   | 7648 – T101 | 2.75 (0.108) |

### T = Contact Plating

- T = 4. 6  $\mu$ " gold over 50  $\mu$ " nickel
- T = 5. 15  $\mu$ " gold over 50  $\mu$ " nickel
- T = 6. 30  $\mu$ " gold over 50  $\mu$ " nickel
- T = 7. 50  $\mu$ " gold over 50  $\mu$ " nickel

