

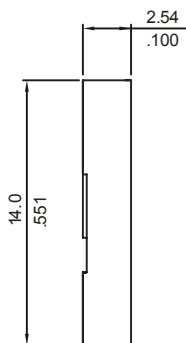
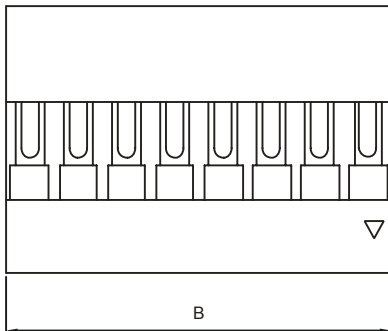
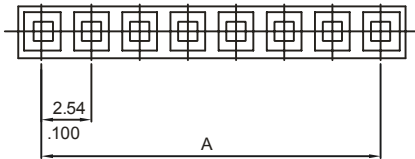
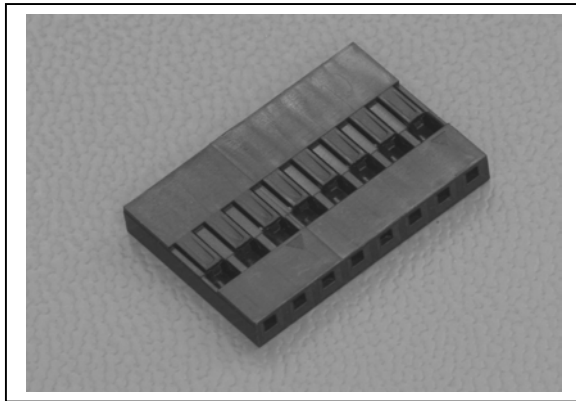
# SINGLE ROW CRIMP TYPE SOCKET

## 2651 SERIES 2.54mm (0.100"). Crimp Type Socket

### Features

- Available in 2 through 30 circuits
- Mates with 2.54mm(.100") single row headers with 0.64mm square pin
- Accepts 2653 and 2663 crimp terminals
- For wire to wire and wire to board applications
- Material: Nylon 6/6 UL94V-2

### Dimensional Information



### Ordering and Dimensional Information

Circuit Size	Part Number	Dimensions	
		A	B
02	<b>2651-3021</b>	2,54(0,100)	5,08(0,200)
03	<b>2651-3031</b>	5,08(0,200)	7,62(0,300)
04	<b>2651-3041</b>	7,62(0,300)	10,16(0,400)
05	<b>2651-3051</b>	10,16(0,400)	12,70(0,500)
06	<b>2651-3061</b>	12,70(0,500)	15,24(0,600)
07	<b>2651-3071</b>	15,24(0,600)	17,78(0,700)
08	<b>2651-3081</b>	17,78(0,700)	20,32(0,800)
09	<b>2651-3091</b>	20,32(0,800)	22,86(0,900)
10	<b>2651-3101</b>	22,86(0,900)	25,40(1,000)
11	<b>2651-3111</b>	25,40(1,000)	27,94(1,100)
12	<b>2651-3121</b>	27,94(1,100)	30,48(1,200)
13	<b>2651-3131</b>	30,48(1,200)	33,02(1,300)
14	<b>2651-3141</b>	33,02(1,300)	35,56(1,400)
15	<b>2651-3151</b>	35,56(1,400)	38,10(1,500)
16	<b>2651-3161</b>	38,10(1,500)	40,64(1,600)
17	<b>2651-3171</b>	40,64(1,600)	43,18(1,700)
18	<b>2651-3181</b>	43,18(1,700)	45,72(1,800)
19	<b>2651-3191</b>	45,72(1,800)	48,26(1,900)
20	<b>2651-3201</b>	48,26(1,900)	50,80(2,000)
21	<b>2651-3211</b>	50,80(2,000)	53,34(2,100)
22	<b>2651-3221</b>	53,34(2,100)	55,88(2,200)
23	<b>2651-3231</b>	55,88(2,200)	58,42(2,300)
24	<b>2651-3241</b>	58,42(2,300)	60,96(2,400)
25	<b>2651-3251</b>	60,96(2,400)	63,50(2,500)
26	<b>2651-3261</b>	63,50(2,500)	66,04(2,600)
27	<b>2651-3271</b>	66,04(2,600)	68,58(2,700)
28	<b>2651-3281</b>	68,58(2,700)	71,12(2,800)
29	<b>2651-3291</b>	71,12(2,800)	73,66(2,900)
30	<b>2651-3301</b>	73,66(2,900)	76,20(3,000)

