

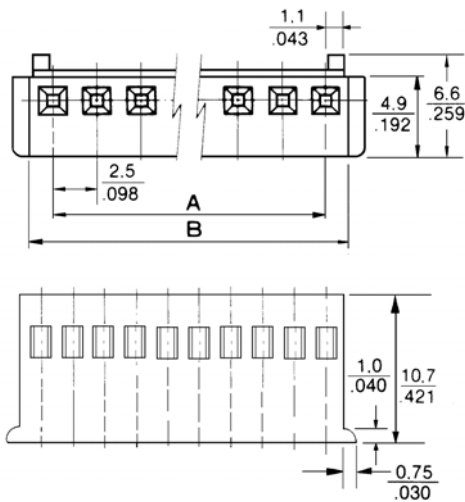
# CRIMP TERMINAL SOCKET

## 2570 SERIES 2.50mm (0.098") Crimp Terminal Socket

### Features

- Available in 2 through 12 circuits
- Mates with 2574 series headers
- Material: Nylon 6/6 UL 94V-0
- Moulded pull tab
- Accepts 2572 series crimp terminal
- Friction lock

### Dimensional Information



### Ordering and Dimensional Information

Circuit Size	Part Number	Dimensions	
		A	B
02	<b>2570-2021</b>	2,50(0,098)	6,00(0,236)
03	<b>2570-2031</b>	5,00(0,197)	8,50(0,335)
04	<b>2570-2041</b>	7,50(0,295)	11,00(0,433)
05	<b>2570-2051</b>	10,00(0,394)	13,50(0,531)
06	<b>2570-2061</b>	12,50(0,492)	16,00(0,630)
07	<b>2570-2071</b>	15,00(0,591)	18,50(0,728)
08	<b>2570-2081</b>	17,50(0,689)	21,00(0,827)
09	<b>2570-2091</b>	20,00(0,787)	23,50(0,925)
10	<b>2570-2101</b>	22,50(0,886)	26,00(1,024)
11	<b>2570-2111</b>	25,00(0,984)	28,50(1,122)
12	<b>2570-2121</b>	27,50(1,083)	31,00(1,220)

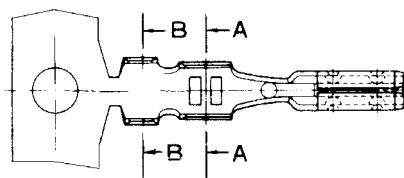
# FEMALE CRIMP TERMINAL

## 2572 SERIES 2.50mm (0.098"). Crimp Terminal

### Features

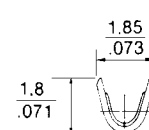
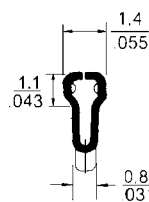
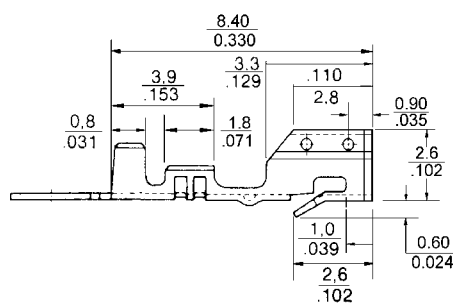
- Material: Pre-finned brass
- Used in 2570 series socket
- Four point contact
- Accommodates wire ranges AWG 22-28
- Insulation diameter 1.90mm(0.075")
- Anti-fish hooking contact design

### Dimensional Information

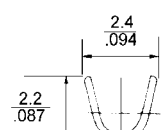


### Ordering and Dimensional Information

Reel Quantity	Part Number	Material	Wire Ranges	Insulation Diameter
10.000 Pcs (Reel)	<b>2572 - 2000</b>	Pre-finned brass	AWG 22 - 28	1.90 (0.075") Max.
Loose Piece	<b>2572 - 2001</b>	Pre-finned brass	AWG 22 - 28	1.90 (0.075") Max.



SECC. A-A



SECC. B-B