

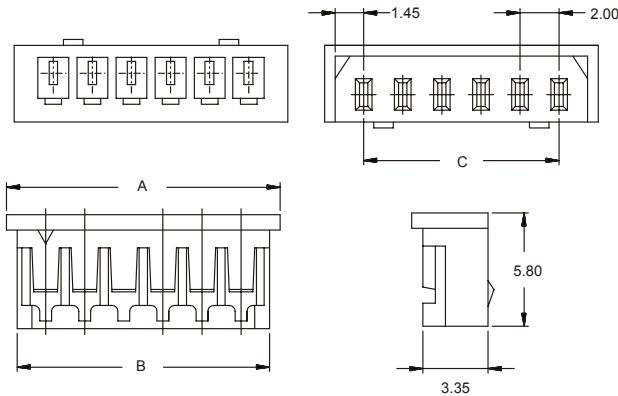
CRIMP TERMINAL HOUSING

2120 SERIES 2.00mm (0.079") With Locking Ramp

Features

- Available in 2 through 15 circuits
- Material: Nylon 6/6 UL 94V-0
- Molded locking ramp
- Mates with male header 2121 and 2122 series
- Mates with terminal 2123 series
- Low profil

Dimensional information



Ordering and dimensional information

Circuit Size	Part Number	Dimensions		
		A	B	C
02	2120-2021	6.00(0.236)	2.00 (0.078)	4.90 (0.193)
03	2120-2031	8.00(0.315)	4.00(0.157)	6.90 (0.272)
04	2120-2041	10.00(0.394)	6.00(0.236)	8.90 (0.350)
05	2120-2051	12.00(0.472)	8.00(0.315)	10.90 (0.429)
06	2120-2061	14.00(0.551)	10.00(0.394)	12.90 (0.508)
07	2120-2071	16.00(0.630)	12.00(0.472)	14.90 (0.587)
08	2120-2081	18.00(0.709)	14.00(0.551)	16.90 (0.744)
09	2120-2091	20.00(0.787)	16.00(0.630)	18.90 (0.744)
10	2120-2101	22.00(0.866)	18.00(0.709)	20.90 (0.823)
11	2120-2111	24.00(0.945)	20.00(0.787)	22.90 (0.902)
12	2120-2121	26.00(1.024)	22.00(0.866)	24.90 (0.908)
13	2120-2131	28.00(1.102)	24.00(0.945)	26.90 (1.059)
14	2120-2141	30.00(1.181)	26.00(1.024)	28.90 (1.138)
15	2120-2151	32.00 (1.260)	28.00(1.102)	30.90 (1.217)

CRIMP TERMINAL MULTICONTACT

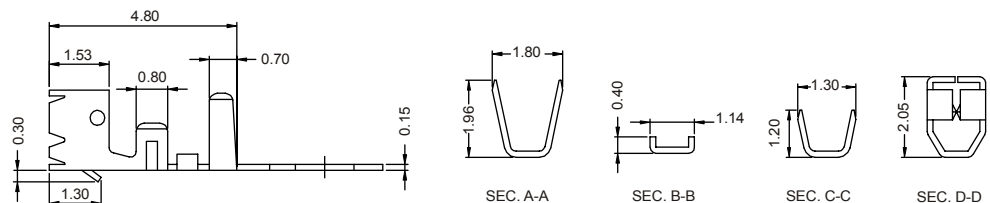
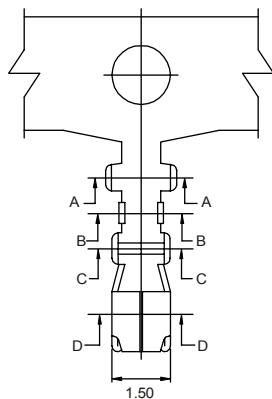
2123 SERIES Reel and Loose Piece

Features

- Material : Tinned Phosphor Bronze
- Wire ranges :24 through 28 AWG
- Mates with 2120 serie
- Insulation diameter maximum: 1.40 mm.
- Multi contact terminal
- Side carrier

Dimensional information

Ordering and dimensional information



Type	Part Number	Material	Wire Range	Diameter
Chain	2123 - 2000	Phosphor Bronze	24 – 28 AWG	1.40 mm. Max.
Loose Piece	2123 - 2001	Phosphor Bronze	24 – 28 AWG	1.40 mm. Max.