

## 5.08mm CRIMP TYPE SOCKET

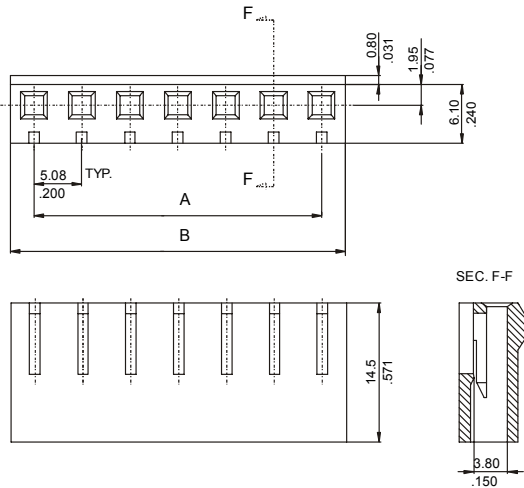
### 5080-A SERIES 5.08mm (0.200") With Locking Ramp

#### Features

- Available in 2 through 16 circuits
- Polarised with locking ramp
- Material: Nylon 6/6 UL 94V-0
- Accepts 3079, 3032 and 3979 Crimp terminal

- Mates with 5016, 5017, 5018, 5086, 5087, 5082, 5083, 5088, 5004, 5005 and 5006 series Headers
- For **GWT** option (Glow Wire Test Approval), please Add **E** at the end of Part Number (Example: 5080-XXXXE)

#### Dimensional Information



#### Ordering and Dimensional Information

Circuit Size	Part Number	Dimensions	
		A	B
02	<b>5080-2021</b>	5,08(0,200)	10,20(0,402)
03	<b>5080-2031</b>	10,16(0,400)	15,20(0,598)
04	<b>5080-2041</b>	15,24(0,600)	20,30(0,799)
05	<b>5080-2051</b>	20,32(0,800)	25,40(1,000)
06	<b>5080-2061</b>	25,40(1,000)	30,50(1,201)
07	<b>5080-2071</b>	30,48(1,200)	35,60(1,402)
08	<b>5080-2081</b>	35,56(1,400)	40,60(1,598)
09	<b>5080-2091</b>	40,64(1,600)	45,70(1,799)
10	<b>5080-2101</b>	45,72(1,800)	50,80(2,000)
11	<b>5080-2111</b>	50,80(2,000)	55,90(2,201)
12	<b>5080-2121</b>	55,88(2,200)	61,00(2,402)
13	<b>5080-2131</b>	60,96(2,400)	66,00(2,598)
14	<b>5080-2141</b>	66,04(2,600)	71,10(2,799)
15	<b>5080-2151</b>	71,12(2,800)	76,20(3,000)
16	<b>5080-2161</b>	76,20(3,000)	81,30(3,201)

## 5.08mm CRIMP TYPE SOCKET

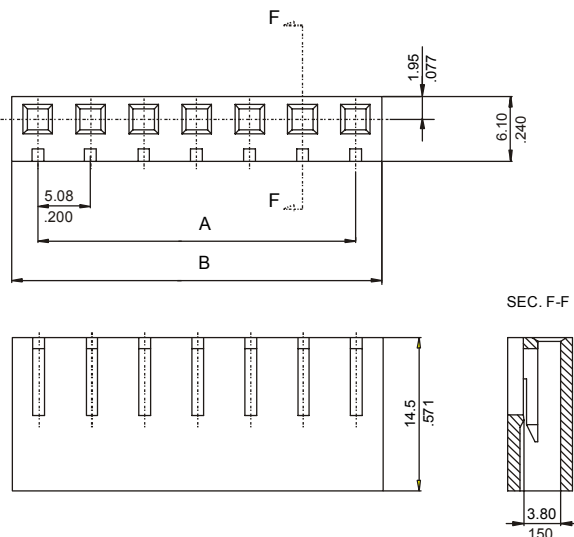
### 5080-B SERIES 5.08mm (0.200") Without Locking Ramp

#### Features

- Available in 2 through 16 circuits
- Without locking ramp
- Material: Nylon 6/6 UL 94V-0
- Accepts 3079, 3032 and 3979 Crimp terminal

- Mates with 5086, 5087, 5088, and 5084 series headers
- For **GWT** option (Glow Wire Test Approval), please Add **E** at the end of Part Number (Example: 5080-XXXXE)

#### Dimensional Information



#### Ordering and Dimensional Information

Circuit Size	Part Number	Dimensions	
		A	B
02	<b>5080-3021</b>	5,08(0,200)	10,20(0,402)
03	<b>5080-3031</b>	10,16(0,400)	15,20(0,598)
04	<b>5080-3041</b>	15,24(0,600)	20,30(0,799)
05	<b>5080-3051</b>	20,32(0,800)	25,40(1,000)
06	<b>5080-3061</b>	25,40(1,000)	30,50(1,201)
07	<b>5080-3071</b>	30,48(1,200)	35,60(1,402)
08	<b>5080-3081</b>	35,56(1,400)	40,60(1,598)
09	<b>5080-3091</b>	40,64(1,600)	45,70(1,799)
10	<b>5080-3101</b>	45,72(1,800)	50,80(2,000)
11	<b>5080-3111</b>	50,80(2,000)	55,90(2,201)
12	<b>5080-3121</b>	55,88(2,200)	61,00(2,402)
13	<b>5080-3131</b>	60,96(2,400)	66,00(2,598)
14	<b>5080-3141</b>	66,04(2,600)	71,10(2,799)
15	<b>5080-3151</b>	71,12(2,800)	76,20(3,000)
16	<b>5080-3161</b>	76,20(3,000)	81,30(3,201)