

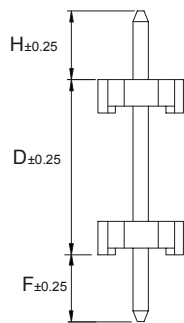
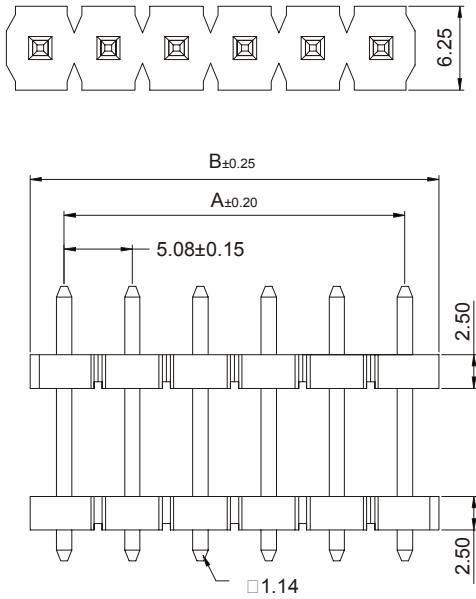
DUAL INSULATOR STRAIGHT HEADER

5071 SERIES 5.08mm (0.200") Square Pin. For PCB Solder

Features

- Available in 2 through 20 circuits
- Insulator Material: LCP UL 94V-0
- 1.14mm (.045") square pin in tinned brass
- Easy breakaway to desired circuits
- Mates with 5070 series headers
- With standoff minimise flux retention
- For Board to Board interconnection
- Other Options consult with the Sales Office

Dimensional Information



MECANIZADO RECOMENDADO
(Tolerancia ±0.05)



Ordering and Dimensional Information

Circuit Size	Part Number	Dimensions	
		A	B
02	5075-202C	5,08(0,200)	10,16(0,400)
03	5075-203C	10,16(0,400)	15,24(0,600)
04	5075-204C	15,24(0,600)	20,32(0,800)
05	5075-205C	20,32(0,800)	25,40(1,000)
06	5075-206C	25,40(1,000)	30,48(1,200)
07	5075-207C	30,48(1,200)	35,56(1,400)
08	5075-208C	35,56(1,400)	40,64(1,600)
09	5075-209C	40,64(1,600)	45,72(1,800)
10	5075-210C	45,72(1,800)	50,80(2,000)
11	5075-211C	50,80(2,000)	55,88(2,200)
12	5075-212C	55,88(2,200)	60,96(2,400)
13	5075-213C	60,96(2,400)	66,04(2,600)
14	5075-214C	66,04(2,600)	71,12(2,800)
15	5075-215C	71,12(2,800)	76,20(3,000)
16	5075-216C	76,20(3,000)	81,28(3,200)
17	5075-217C	81,28(3,200)	86,36(3,400)
18	5075-218C	86,36(3,400)	91,44(3,600)
19	5075-219C	91,44(3,600)	96,52(3,800)
20	5075-220C	96,52(3,800)	101,60(4,000)

C = Pin Dimension

- C = 1. H = 5.10mm. D = 6.85mm. F = 2.30mm