

3.96mm CRIMP TERMINAL

3953 & 3954 SERIES 3.96mm Crimp Terminal

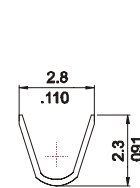
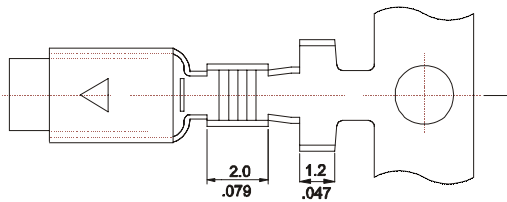
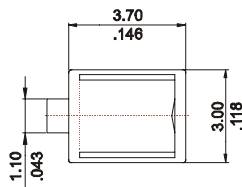
Features

- Contact Material: Pre-tinned copper alloy
- Dual contact row
- Mates with 1.14 mm. (.045") square pin
- Can be used in 3950 series socket
- Accommodates wire ranges: AWG 18 - 26

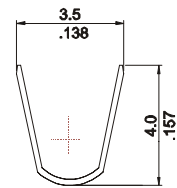
Dimensional Information

Ordering and Dimensional Information

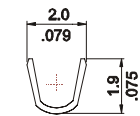
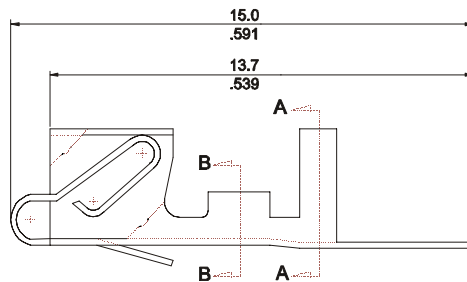
Reel Quantity	Part Number	Material	Wire Range	Insulation Diameter
12,000 Pcs (Reel)	3953 - 2000	Cooper Alloy	18 - 22 AWG	2.70 (0.106) Max.
Loose Piece	3953 - 2001	Cooper Alloy	18 - 22 AWG	2.70(0.106) Max.
12,000 Pcs (Reel)	3954 - 2000	Cooper Alloy	22 - 26 AWG	1.50 (0.059) Max.
Loose Piece	3954 - 2001	Cooper Alloy	22 - 26 AWG	1.50 (0.059) Max.



SEC. A-A

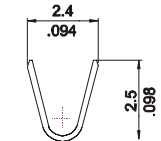


SEC. A-A



SEC. B-B

(3954-2000)



SEC. B-B

(3953-2000)