

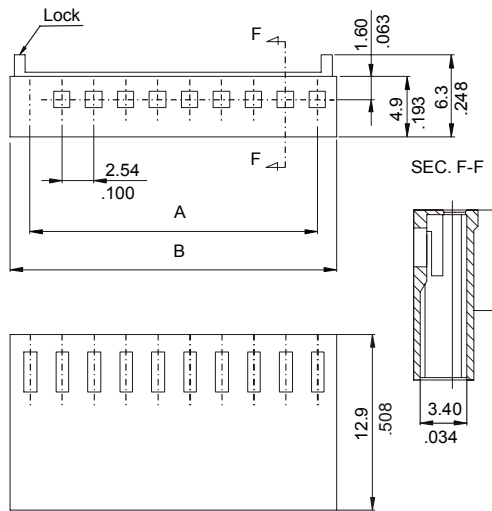
# POLARISED CRIMP TERMINAL HOUSING

## 2544-A SERIES 2.54mm (0.100") With Locking Ramp

### Features

- Available in 2 through 20 circuits
- Polarised with locking ramp
- Material : Nylon UL 94V-0
- Accepts 2044 series crimp terminal
- Mates with 2532, 2534, 2545, 2542, 2549, 2556 and 2567 series
- Colour: Natural

### Dimensional Information



### Ordering and Dimensional Information

| Circuit Size | Part Number | Dimensions   |              |
|--------------|-------------|--------------|--------------|
|              |             | A            | B            |
| 02           | 2544 - 2021 | 2,54(0,100)  | 5,70(0,224)  |
| 03           | 2544 - 2031 | 5,08(0,200)  | 8,24(0,324)  |
| 04           | 2544 - 2041 | 7,62(0,300)  | 10,78(0,424) |
| 05           | 2544 - 2051 | 10,16(0,400) | 13,32(0,524) |
| 06           | 2544 - 2061 | 12,70(0,500) | 15,86(0,624) |
| 07           | 2544 - 2071 | 15,24(0,600) | 18,40(0,724) |
| 08           | 2544 - 2081 | 17,78(0,700) | 20,94(0,824) |
| 09           | 2544 - 2091 | 20,32(0,800) | 23,48(0,924) |
| 10           | 2544 - 2101 | 22,86(0,900) | 26,02(1,024) |
| 11           | 2544 - 2111 | 25,40(1,000) | 28,56(1,124) |
| 12           | 2544 - 2121 | 27,94(1,100) | 31,10(1,224) |
| 13           | 2544 - 2131 | 30,48(1,200) | 33,64(1,324) |
| 14           | 2544 - 2141 | 33,02(1,300) | 36,18(1,424) |
| 15           | 2544 - 2151 | 35,56(1,400) | 38,72(1,524) |
| 16           | 2544 - 2161 | 38,10(1,500) | 41,26(1,624) |
| 17           | 2544 - 2171 | 40,64(1,600) | 43,80(1,724) |
| 18           | 2544 - 2181 | 43,18(1,700) | 46,34(1,824) |
| 19           | 2544 - 2191 | 45,72(1,800) | 48,88(1,924) |
| 20           | 2544 - 2201 | 48,26(1,900) | 51,42(2,024) |

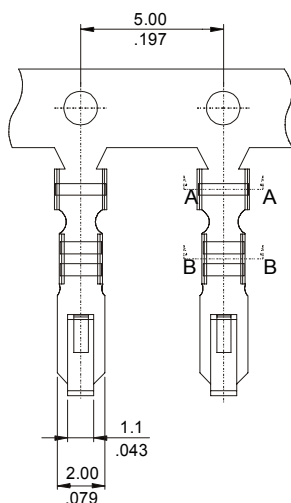
# CRIMP TERMINAL

## 2044 SERIES. 2.54mm Crimp Terminal

### Features

- Accommodates wires ranges AWG 22-28
- Material: Pre-finned copper Alloy
- Different material options are available
- Mates with 2544 A, 2544 B and 2430 series socket
- Insulation diameter: 1.50mm(0.059") Max.

### Dimensional Information



### Ordering and Dimensional Information

| Reel Quantity   | Part Number | Material    | Wire Ranges | Insulation Diameter |
|-----------------|-------------|-------------|-------------|---------------------|
| 8,000Pcs (Reel) | 2044 - 2000 | Tin Plating | AWG 22 - 28 | 1,50 (0,059") Max.  |
| Loose Piece     | 2044 - 2001 | Tin Plating | AWG 22 - 28 | 1,50 (0,059") Max.  |

