

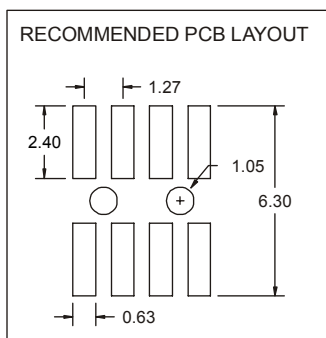
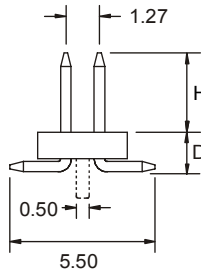
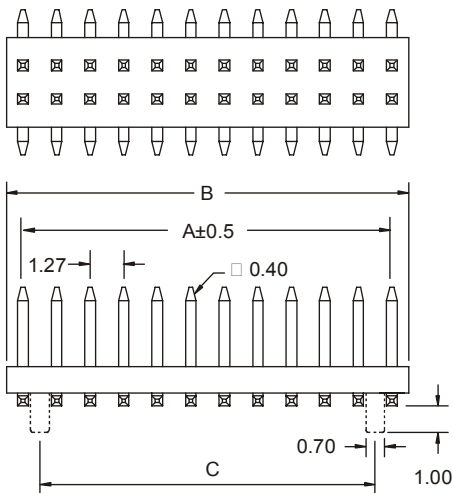
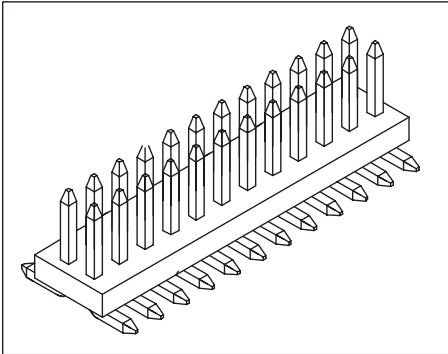
DUAL ROW STRAIGHT HEADER SMT

1360 SERIE 1.27 x 1.27 mm. (0.050 x 0.050"). For PCB solder

Features

- Available in 6 through 80 circuits
- Mates with housing and dual row header 1.27mm
- Material: nylon 6T UL 94V-0
- Without polarisation
- 0.40 mm square pin
- Available with or without fixing post
- For other options consult the Sales Office

Dimensional information:



DIMENSIONS:

$$A = 1.27 \left(\frac{XX}{2} - 1 \right) \quad B = 1.27 \left(\frac{XX}{2} \right) \quad C = 1.27 \left(\frac{XX}{2} - 2 \right)$$

XX = Number of circuits

Ordering and dimensional information:

1360 - **T**- **XX**- **L**- **P**- **S**- **E**
 1 2 3 4 5 6 7

1. CONECTOR SERIE

2. CONTACT PLATING

- T = 2. Tin-plated.
- T = 3. Gold flash over 1.27 μ Ni.
RECOMMENDED FINISH
- T = 4. 0.25 μ Gold over 1.27 μ Ni.
- T = 5. 0.38 μ Gold over 1.27 μ Ni.
- T = 6. 0.75 μ Gold over 1.27 μ Ni.

3. (XX) NUMBER OF CONTACT

- Available in 10 through 100 circuits
(For 100 circuits replace XX with 00)

4. (L) INSULATOR BASE LENGHT

- L = 1. D = 1.50 mm.
- L = 2. D = 2.00 mm.
- L = 3. D = 2.50 mm.

5.(P) FIXING POST

- P = 1. Without fixing post
- P = 2. With fixing post

6.(S) PIN LENGHT

- S = 1. Dimension H = 3.00 mm.
- S = 2. Dimension H = 1.50 mm.
- S = 3. Dimension H = 1.90 mm.

7. (E) CONECTOR PACKAGING

- E = 1. Tube + Plastic cover
- E = 2. Reel + Plastic cover